

Acht Fugen from Orgelwerke Volume I by W. Fr. Bach *Arranged for Saxophone Quintet (or Saxophone Choir)*

The following pages contain the parts for an arrangement for a saxophone SAATB quintet (or saxophone choir).

IMPORTANT NOTE: This is a scan of hand-written parts. When printing, choose the option to "Fit to Printable Area" or "Shrink to Printable Area" to get all of the scanned area onto an 8.5x11 page.

Comments regarding the arrangement:

- The original keys were preserved.
- While there are only 5 distinct parts (SAATB), this works well with parts played by multiple players in a saxophone choir setting.

I've provided this arrangement free of charge. If you perform this piece, I'd appreciate hearing about it and if possible, I'd like to receive a copy of the program and a recording. I can be contacted at eddie@classicalsax.com

If you find any issues in the arrangement, please let me know so I can publish corrections.

Bb Soprano Sax

Acht Fugen
(from Orgelwerke)

J. Fr. Bach
(1710-1784)

I

$\text{♩} = 60$

Handwritten musical score for the first system of 'Acht Fugen' by J. Fr. Bach, transcribed for Bb Soprano Sax. The score is in treble clef with a key signature of two sharps (F# and C#) and a common time signature (C). It consists of eight staves of music. The first staff begins with a 3-measure rest followed by a melodic line. Subsequent staves continue the melody with various rhythmic patterns, including eighth and sixteenth notes, and rests. Measure numbers 4, 7, 10, 13, 16, 19, 22, and 25 are marked in small boxes above the notes. The system concludes with a double bar line on the eighth staff.

II

$\text{♩} = 104$

Handwritten musical score for the second system of 'Acht Fugen' by J. Fr. Bach, transcribed for Bb Soprano Sax. The score is in treble clef with a key signature of two sharps (F# and C#) and a 3/8 time signature. It consists of one staff of music. The first measure is a 3-measure rest, followed by a melodic line. Measure numbers 9 and 12 are marked in small boxes above the notes. The system concludes with a double bar line.

Handwritten musical score for Soprano, measures 17-73. The score is written on a single staff in treble clef with a key signature of one sharp (F#). The music consists of a series of eighth and sixteenth notes, often beamed together in groups. Measure numbers 17, 25, 33, 41, 49, 57, 65, and 73 are marked in small boxes above the staff. The piece concludes with a double bar line at measure 73.

III

$\text{♩} = 12$

Handwritten musical score for Soprano, measures 74-80. The score is written on a single staff in treble clef with a key signature of two sharps (F# and C#) and a time signature of 2/4. The music begins with a whole rest in measure 74, followed by eighth and sixteenth notes. Measure numbers 74, 75, 76, 77, 78, 79, and 80 are marked in small boxes above the staff. The piece concludes with a double bar line at measure 80.

Handwritten musical notation for the first system, measures 1-16. The key signature is three sharps (F#, C#, G#). The notation includes various rhythmic values, slurs, and dynamic markings. Measure numbers 9, 17, 25, and 33 are boxed in the original image.

IV

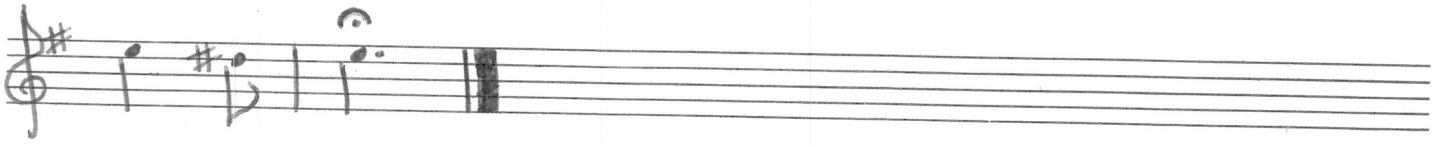
$\text{♩} = 80$

Handwritten musical notation for the second system, measures 17-33. The key signature is one sharp (F#). The notation includes triplets, slurs, and dynamic markings. Measure numbers 17, 25, and 33 are boxed in the original image.

Soprano

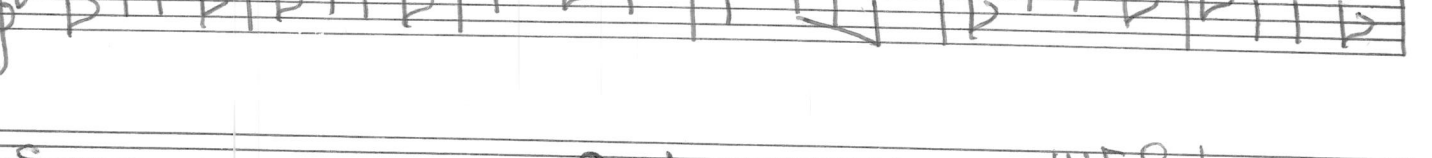
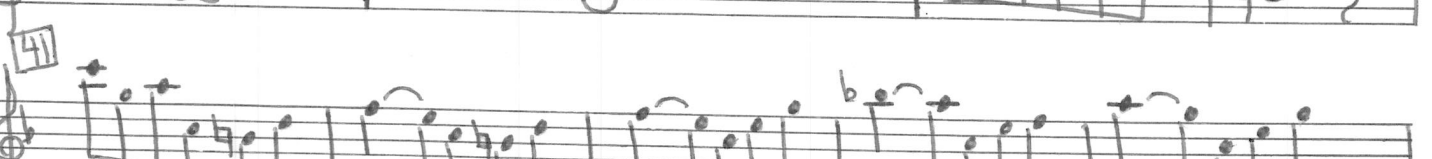
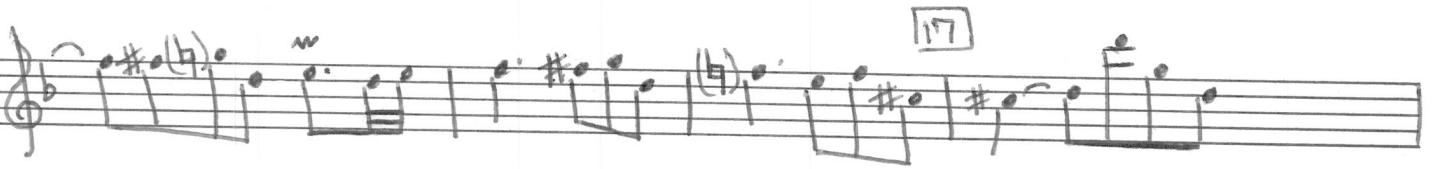
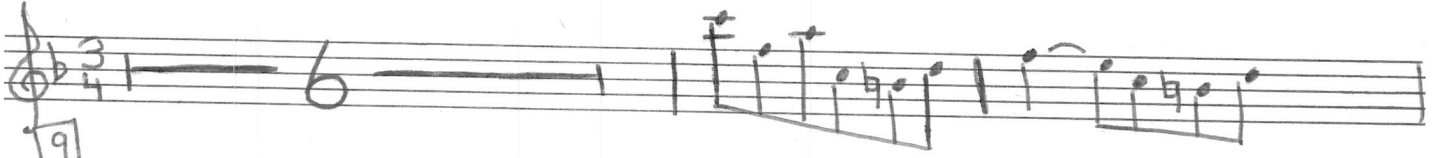
B \flat 3-

W.F. Bach
Acht Fugen



V

$\text{♩} = 92$

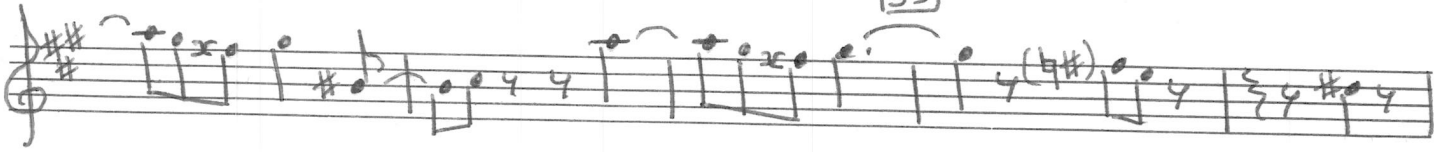


Handwritten musical notation for Soprano, measures 57-97. The notation includes various note values, rests, and dynamic markings such as *ff*. Measure numbers 57, 65, 73, 81, and 89 are boxed. The piece concludes with a double bar line.

VI

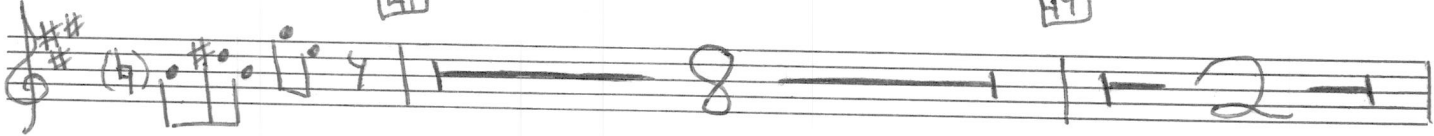
Handwritten musical notation for Soprano, measures 99-25. The notation includes various note values, rests, and dynamic markings such as *w*. Measure numbers 99, 17, and 25 are boxed. A tempo marking *♩. = 66* is present at the beginning of the section.

33

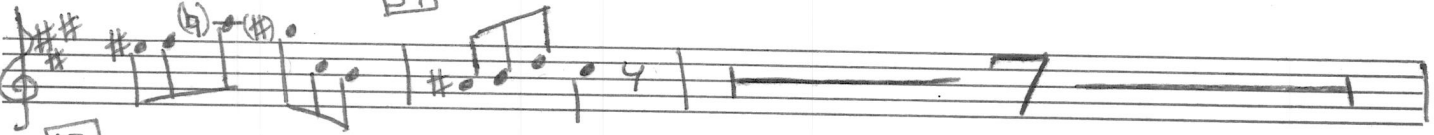


41

49



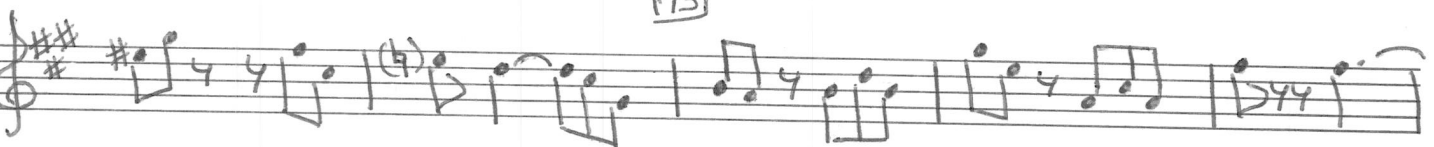
57



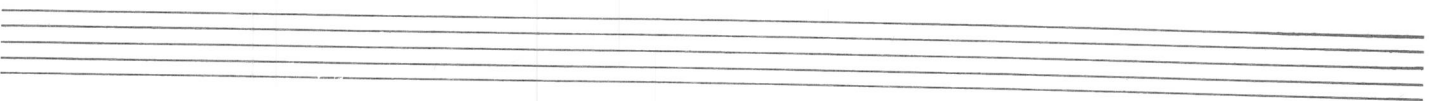
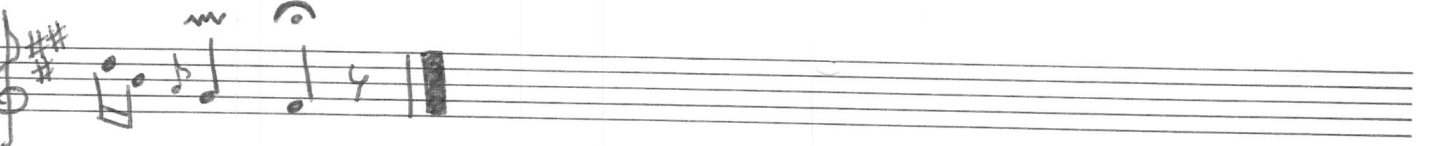
65



73



81



Soprano

Pg-6-

W.F. Bach
Acht Fugen

VII

$\text{♩} = 76$ Trio w/Alto and Tenor

Handwritten musical score for Trio w/Alto and Tenor, Part VII. The score consists of eight staves of music in treble clef with a 6/8 time signature. It includes various musical notations such as rests, notes, and accidentals. Measure numbers 9, 17, 25, and 33 are boxed in the score.

VIII

$\text{♩} = 58$

Handwritten musical score for Part VIII. The score consists of one staff of music in treble clef with a 2/4 time signature. It includes rests and notes. A measure number 9 is boxed in the score.

Soprano

Pg. 7-

W.F. Bach
Acht Fugen

Handwritten musical score for Soprano voice, measures 17-97. The score is written on ten staves in G major (one sharp) and 3/4 time. The notation includes various note values, rests, and accidentals. Measure numbers are boxed and placed above the staves: 17, 25, 33, 41, 49, 57, 65, 73, 81, 89, and 97. The music features a mix of eighth and sixteenth notes, often beamed together, and includes some chromatic passages. The key signature is G major, and the time signature is 3/4. The score ends with a double bar line and repeat dots at measure 97.

Handwritten musical score for Soprano voice, measures 105-193. The score is written on ten staves in G major (one sharp) and 4/4 time. The notation includes various rhythmic values, accidentals, and dynamic markings. Measure numbers are boxed and placed above the corresponding measures.

Measures 105-112: Melodic line with quarter and eighth notes, some with slurs.

Measures 113-120: Similar melodic line, including a measure with a fermata.

Measures 121-128: Continuation of the melodic line with slurs.

Measures 129-136: Melodic line with slurs and a fermata.

Measures 137-144: Melodic line with slurs and a fermata.

Measures 145-152: Melodic line with slurs and a fermata.

Measures 153-160: Melodic line with slurs and a fermata.

Measures 161-168: Melodic line with slurs and a fermata.

Measures 169-176: Melodic line with slurs and a fermata.

Measures 177-184: Melodic line with slurs and a fermata.

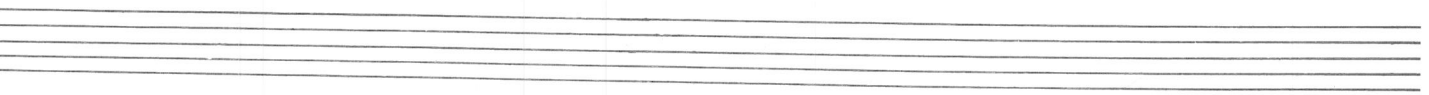
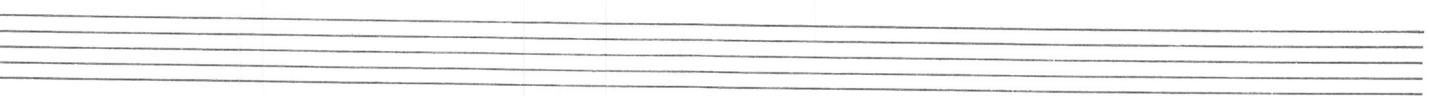
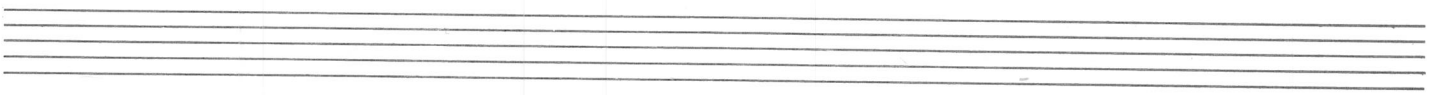
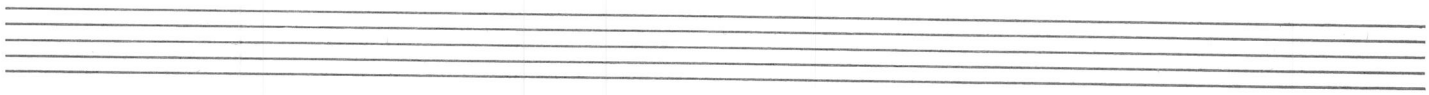
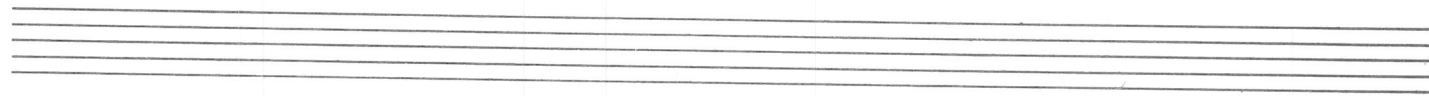
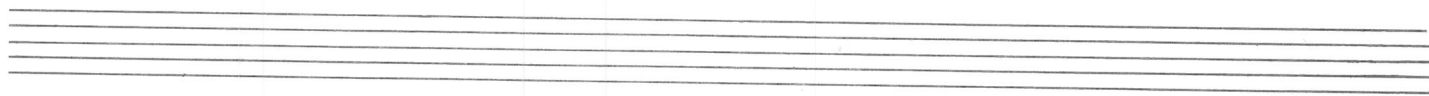
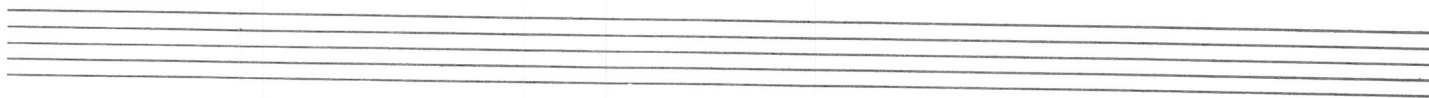
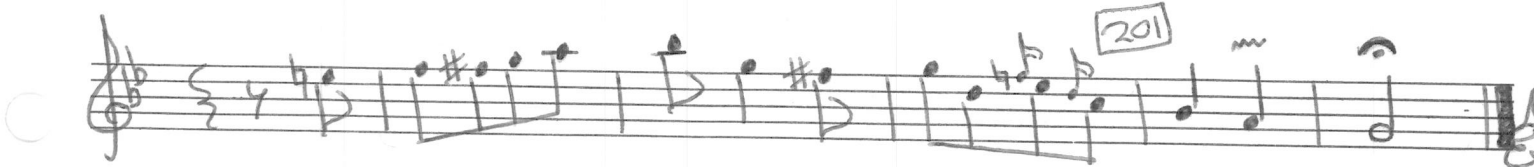
Measures 185-192: Melodic line with slurs and a fermata.

Measure 193: Melodic line with slurs and a fermata.

Soprano

B-9-

W.F. Bach
Acht Fugen



Soprano Rg -10- W.F. Bach
Acht + Fugen

4

E♭ Alto Sax I

Acht Fugen
(from Orgelwerke)

W. Fr. Bach
(1710-1784)

I

♩ = 60

4

7

10

13

16

19

22

25

-1-

Handwritten musical score for a single staff in treble clef, 3/8 time signature. The tempo is marked $\text{♩} = 104$. The score is divided into two systems by a Roman numeral **II** at the top. The music consists of a series of eighth and sixteenth notes, often beamed together. Measure numbers are boxed and placed above the staff at intervals: 9, 17, 25, 33, 41, 49, 57, and 65. The key signature is one sharp (F#). The notation includes various rhythmic values, accidentals, and phrasing slurs.

73

III

♩ = 72

9

17

25

33

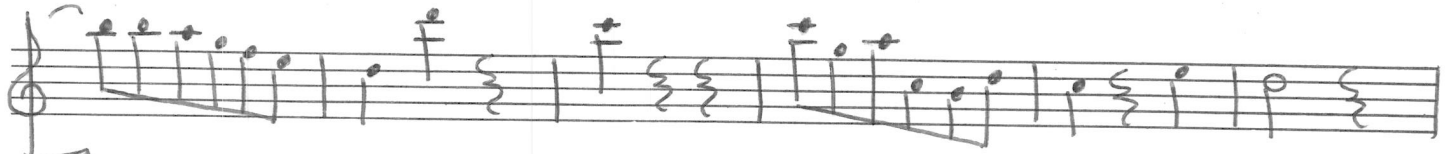
IV

♩ = 80

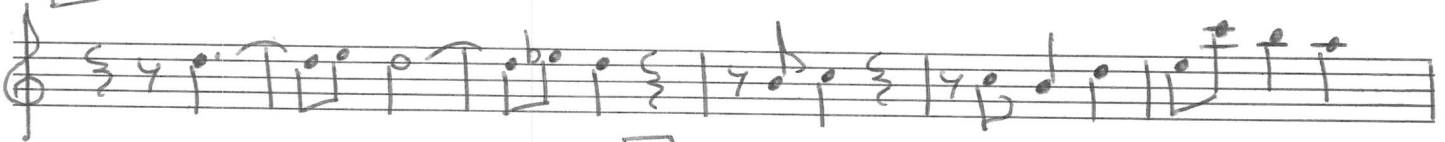
Handwritten musical score for the first system of a fugue. It consists of six staves of music in G major. The first staff starts with a box containing the number 9. The second staff has a box with 17. The third staff has boxes with 25 and 33. The fourth staff has a box with 33. The fifth staff has a box with 33. The sixth staff ends with a double bar line. The music features various rhythmic patterns, including triplets and sixteenth notes, and includes some accidentals like flats and naturals.

Handwritten musical score for the second system of a fugue. It consists of three staves of music in G major. The first staff starts with a box containing the number 9. The second staff has a box with 17. The third staff has a box with 25. The music continues with similar rhythmic patterns and includes a fermata on the second staff.

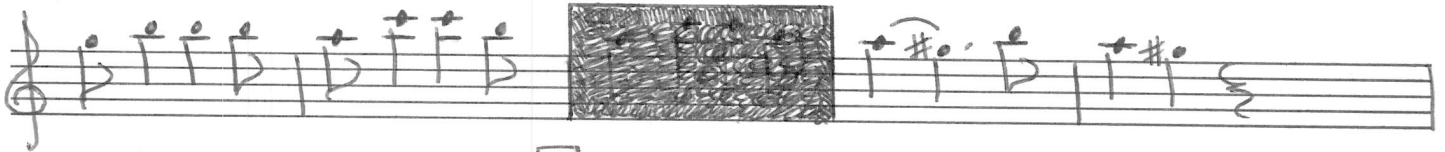
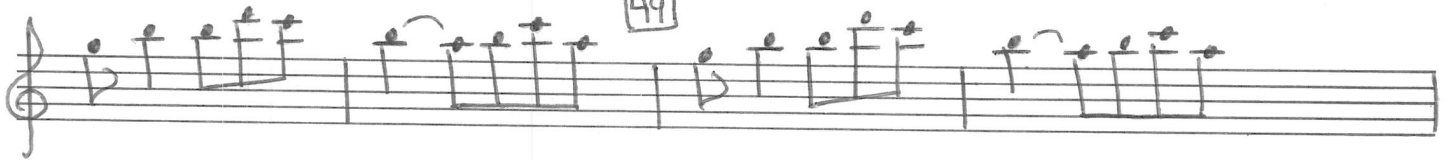
33



41



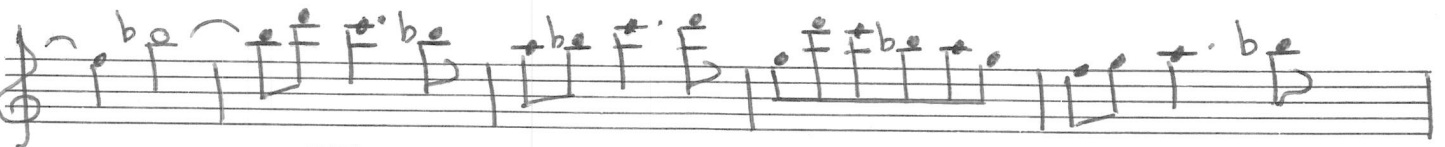
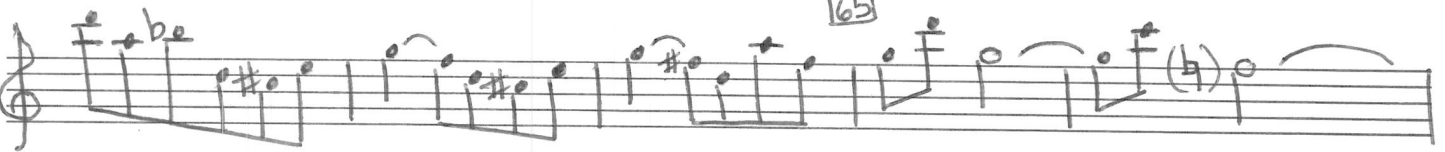
49



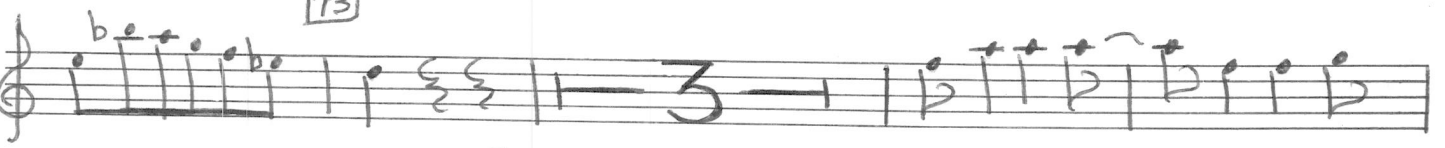
57



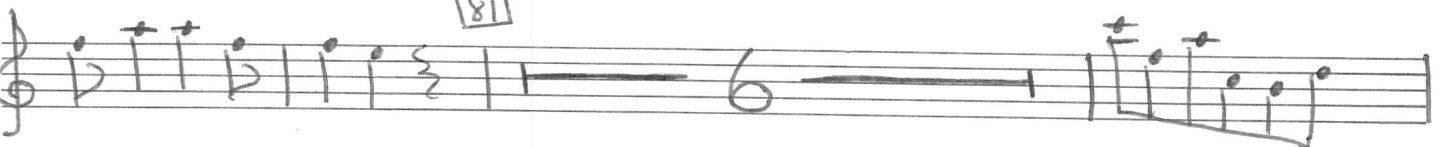
65



73



81



89



Alto I

B \flat -5-

W.F. Bach
Acht Fugen

Handwritten musical notation for the first system, consisting of two staves. The first staff has a circled '9' above it. The second staff ends with a double bar line.

VI

J. = 66

Handwritten musical notation for the second system, consisting of two staves. The first staff has a circled '9' above it. The second staff has a circled '17' below it.

Handwritten musical notation for the third system, consisting of two staves. The first staff has a circled '25' below it.

Handwritten musical notation for the fourth system, consisting of two staves. The first staff has a circled '33' above it.

Handwritten musical notation for the fifth system, consisting of two staves. The first staff has a circled '41' below it.

Handwritten musical notation for the sixth system, consisting of two staves. The first staff has a circled '49' above it.

Handwritten musical notation for the seventh system, consisting of two staves.

Handwritten musical notation for the eighth system, consisting of two staves.

Handwritten musical notation for a single voice part, likely Soprano or Tenor, in G major (two sharps). The notation is on a single staff with a treble clef. It consists of six lines of music. Measure numbers 57, 65, 73, and 81 are boxed and placed above the staff. The music features various rhythmic values, including eighth and sixteenth notes, and rests. There are some handwritten annotations, such as a '9' above a measure and a '(b#)' below a measure.

VII

p. = 76 Trio w/ Soprano & Tenor

Handwritten musical notation for a Trio (Soprano & Tenor) in G major. The notation is on a single staff with a treble clef and a 6/8 time signature. It consists of four lines of music. Measure numbers 9 and 17 are boxed and placed above the staff. The music features various rhythmic values, including eighth and sixteenth notes, and rests. There are some handwritten annotations, such as a '(b)' below a measure and a '(b)' above a measure. The word "Dua if possible" is written above a measure with a dashed line.

Handwritten musical notation for measures 25 through 41. The music is written on four staves in treble clef with a key signature of one sharp (F#). Measure numbers 25, 33, and 41 are boxed. The notation includes various rhythmic values, accidentals, and phrasing slurs.

VIII

Handwritten musical notation for measures 9 through 49. The music is written on six staves in treble clef with a key signature of one flat (Bb). A tempo marking of quarter note = 58 is present at the beginning. Measure numbers 9, 17, 25, 33, 41, and 49 are boxed. The notation includes various rhythmic values, accidentals, and phrasing slurs.

Handwritten musical score for Alto I, measures 57-153. The score is written on ten staves in treble clef with a key signature of one flat (B-flat). The notation includes various note values, rests, and accidentals. Measure numbers are boxed and placed above the staves: 57, 65, 73, 81, 89, 97, 105, 113, 121, 129, 137, 145, and 153. The music features a mix of eighth and sixteenth notes, often beamed together, and includes some complex rhythmic patterns and rests.

Handwritten musical score for a single voice part, likely a fugue. The score consists of seven staves of music. The first staff begins with a treble clef and a 4/4 time signature. The music is written in a key with one sharp (F#) and a common time signature. The score includes various musical notations such as eighth notes, quarter notes, and rests. There are several boxed numbers indicating measure numbers: 161, 169, 177, 185, 193, and 201. The piece concludes with a double bar line and a decorative flourish.

Four empty musical staves for a multi-voice setting of the fugue.

E♭ Alto Sax II

Acht Fugen
(from Orgelwerke)

W. Fr. Bach
(1710-1784)

I

♩ = 60

4

7

10

13

16

19

22

25

II

$\text{♩} = 104$

9 17 25 33 41 49 57 65

13 14 a

III

$\text{♩} = 72$

16 17 18

IV

$\text{♩} = 80$

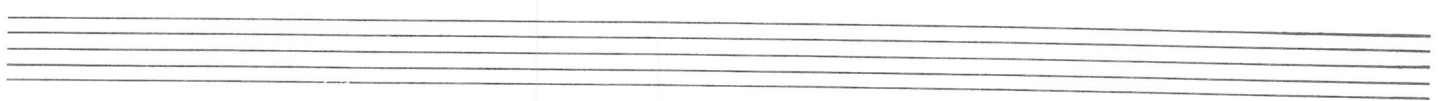
53 54 55 56

Handwritten musical score for the first system of the 'Acht Fugen' for Alto II. It consists of six staves of music in G major, featuring various rhythmic patterns and trills. Measure numbers 7, 25, and 33 are boxed. The piece concludes with a double bar line.

V

Handwritten musical score for the second system of the 'Acht Fugen' for Alto II. It begins with a tempo marking of quarter note = 92. The system contains four staves of music with measure numbers 9, 17, and 25 boxed. The music continues with similar rhythmic complexity as the first system.

Handwritten musical score for Alto II, measures 33-100. The score is written on ten staves. The first staff begins with measure 33. The second staff contains measures 33-40, with a boxed '33' above the first measure. The third staff contains measures 41-48, with a boxed '41' above the first measure. The fourth staff contains measures 49-56, with a boxed '49' above the first measure and a boxed '57' above the eighth measure. The fifth staff contains measures 57-64, with a boxed '65' above the eighth measure. The sixth staff contains measures 65-72, with a boxed '73' above the first measure. The seventh staff contains measures 73-80, with a boxed '81' above the first measure and a boxed '89' above the eighth measure. The eighth staff contains measures 81-88, with a boxed '97' above the eighth measure. The ninth staff contains measures 89-96. The tenth staff contains measures 97-100. The score includes various musical notations such as notes, rests, and bar lines.



VI

Handwritten musical score for Alto II, measures 1-65. The score is written on ten staves in G major (three sharps) and 6/8 time. The tempo is marked as ♩ = 66. Measure numbers 9, 17, 25, 33, 41, 49, 57, and 65 are boxed. The notation includes various rhythmic values, accidentals, and articulation marks.

Alto II

Bj - 6 -

W.F. Bach
Acht Fugen

Handwritten musical notation for the first system, measures 73-81. The key signature is two sharps (F# and C#). Measure 73 is marked with a boxed '73'. Measure 81 is marked with a boxed '81'. The notation includes various note values, rests, and a fermata over a whole note in measure 81.

VII

Tacet

VIII

$\text{♩} = 58$

Handwritten musical notation for the second system, measures 9-33. The key signature is one flat (Bb) and the time signature is 2/4. Measure 9 is marked with a boxed '9'. Measure 17 is marked with a boxed '17'. Measure 25 is marked with a boxed '25'. Measure 33 is marked with a boxed '33'. The notation includes various note values, rests, and a fermata over a whole note in measure 17.

Alto II

Pg -7-

W.F. Bach
Achtstugen

Handwritten musical score for Alto II, measures 137-201. The score is written on a single staff in treble clef with a key signature of one sharp (F#). The notation includes various note values, rests, and dynamic markings. The measures are numbered in boxes: 137, 145, 153, 161, 169, 177, 185, 193, and 201. The piece concludes with a double bar line and a fermata over the final note.

Three empty musical staves, each consisting of five lines, positioned below the main score.

Bb Tenor Sax

2

Acht Fugen
(from Orgelwerke)

W. Fr. Bach
(1710-1784)

I

$\text{♩} = 60$

II

$\text{♩} = 40$

Handwritten musical score for Tenor, measures 1-80. The score is written on ten staves. Measures 1-4 are marked with a boxed '9'. Measures 5-8 are marked with a boxed '17'. Measures 9-12 are marked with a boxed '25'. Measures 13-16 are marked with a boxed '33'. Measures 17-20 are marked with a boxed '41'. Measures 21-24 are marked with a boxed '49'. Measures 25-28 are marked with a boxed '57'. Measures 29-32 are marked with a boxed '65'. Measures 33-36 are marked with a boxed '73'. The score includes various musical notations such as notes, rests, accidentals, and dynamic markings. A 'Bring Out!' marking is present above measures 33-36. The piece concludes with a double bar line at the end of measure 80.

III

$\text{♩} = 72$

Handwritten musical score for section III, measures 1-33. The score is written on six staves in treble clef with a key signature of two sharps (F# and C#). The time signature is 2/4. Measure numbers 9, 17, 25, and 33 are boxed. The notation includes various rhythmic values, accidentals, and dynamic markings such as p and f . The section concludes with a double bar line and repeat dots.

IV

$\text{♩} = 80$

Handwritten musical score for section IV, measures 1-33. The score is written on three staves in treble clef with a key signature of one sharp (F#). The time signature is 3/8. Measure numbers 9, 17, and 25 are boxed. The notation includes triplets and various rhythmic values. The section concludes with a double bar line and repeat dots.

Tenor

Handwritten musical notation for the first system of a piece in G major, 3/4 time. It consists of three staves. The first staff contains the main melody with a key signature of one sharp (F#) and a 3/4 time signature. The second and third staves contain accompaniment, featuring several triplet figures. A box containing the number '33' is placed above the second staff.

V

Handwritten musical notation for the second system of the piece, starting with a tempo marking of quarter note = 92. It consists of eight staves. The first staff shows a 3/4 time signature and a tempo marking of quarter note = 92. The second staff begins with a box containing the number '17'. The third staff has a box with '25' and a fermata. The fourth staff has a box with '33'. The fifth staff has a box with '41'. The sixth staff has a box with '49'. The seventh staff has a box with '57'. The eighth staff contains a long rest of 6 measures followed by a rest of 5 measures.

Tenor

Pg - 4 -

W.F. Bach
Acht Fugen

Handwritten musical notation for a vocal line, measures 65-97. The notation is on a single staff with a treble clef. It features a series of eighth and sixteenth notes, often beamed together. There are several accidentals (flats) and some notes with slurs. Measure numbers 65, 73, 81, 89, and 97 are boxed and placed above the staff. The piece concludes with a double bar line.

VI

Handwritten musical notation for a vocal line, measures 9-33. The notation is on a single staff with a treble clef. It begins with a tempo marking $\text{♩} = 66$ and a key signature of two sharps (F# and C#). The notation includes rests, eighth notes, and sixteenth notes. Measure numbers 9, 17, 25, and 33 are boxed and placed above the staff. The piece concludes with a double bar line.

Handwritten musical score for a single voice part, measures 41-88. The key signature is two sharps (F# and C#). The notation includes various rhythmic values, rests, and dynamic markings. Measure numbers 41, 49, 57, 65, 73, and 81 are boxed. The piece concludes with a double bar line at the end of measure 88.

VII

p. = 76 Trio w/ Soprano & Alto I

Handwritten musical score for a Trio, measures 9-16. The key signature is two sharps (F# and C#). The time signature is 6/16. The notation includes various rhythmic values and dynamic markings. Measure number 9 is boxed.

Handwritten musical notation for the first system, consisting of six staves of music in treble clef with a 4/4 time signature. The notation includes various note values, rests, and accidentals. Measure numbers 17, 25, 33, and 41 are boxed and placed above the staves.

VIII

$\text{♩} = 58$

Handwritten musical notation for the second system, consisting of four staves of music in treble clef with a 2/4 time signature. The notation includes various note values, rests, and accidentals. Measure numbers 9 and 17 are boxed and placed above the staves.

Handwritten musical score for Tenor, measures 33-113. The score is written on ten staves in G major (one sharp) and 4/4 time. The notation includes various rhythmic values (quarter, eighth, sixteenth notes), rests, and dynamic markings. Measure numbers are boxed and placed above the staves: 33, 41, 49, 57, 65, 73, 81, 89, 97, 105, and 113. The music features a mix of eighth and sixteenth notes, often beamed together, and includes some triplet markings. The key signature is G major, and the time signature is 4/4.

Handwritten musical score for Tenor, measures 121-201. The score is written on ten staves. The first staff begins with measure 121. The second staff contains measure 129 and measure 137. The third staff contains measure 145. The fourth staff contains measure 153 and measure 161. The fifth staff contains measure 169. The sixth staff contains measure 177. The seventh staff contains measure 185. The eighth staff contains measure 193. The ninth staff contains measure 201. The score includes various musical notations such as notes, rests, accidentals, and dynamic markings. There are also some handwritten annotations in parentheses, such as (b) and (b).

Tenor

Pg - 9 -

W.F. Bach
Acht Fagen

2

E♭ Baritone Sax

Acht Fugen
(from Orgelwerke)

W. Fr. Bach
(1710 - 1784)

I

$J=60$

4

7

10

13

16

19

22

II

$J=104$

9

- 1 -

Handwritten musical score for the first system, measures 17-72. The score is written on ten staves in treble clef. Measure numbers 17, 25, 33, 41, 49, 57, 65, and 73 are boxed and placed above the staves. The notation includes various rhythmic values, accidentals, and phrasing slurs. The key signature changes from one sharp (F#) to two sharps (F# and C#) between measures 57 and 65.

III

Handwritten musical score for the second system, measures 9-12. The score is written on one staff in treble clef. Measure 9 is boxed. The key signature is two sharps (F# and C#) and the time signature is 2/4. The notation includes a whole rest in measure 10, followed by eighth notes in measures 11 and 12.

Handwritten musical notation for the first system, measures 17-33. The key signature is three sharps (F#, C#, G#) and the time signature is 3/8. The notation includes various rhythmic patterns, including eighth and sixteenth notes, and rests. Measure numbers 17, 25, and 33 are boxed. The system ends with a double bar line.

IV

Handwritten musical notation for the second system, measures 33-49. The key signature is three sharps (F#, C#, G#) and the time signature is 3/8. The tempo marking is $\text{♩} = 80$. The notation includes various rhythmic patterns, including eighth and sixteenth notes, and rests. Measure numbers 9, 17, 25, and 33 are boxed. The system ends with a double bar line.

V

Handwritten musical notation for the third system, measures 49-55. The key signature is three sharps (F#, C#, G#) and the time signature is 3/4. The tempo marking is $\text{♩} = 92$. The notation includes various rhythmic patterns, including eighth and sixteenth notes, and rests. Measure number 9 is boxed. The system ends with a double bar line.

Handwritten musical score for Baritone, measures 17-90. The score is written on ten staves in treble clef. Measure numbers are boxed and placed above the staves: 17, 25, 33, 41, 49, 57, 65, 73, 81, and 89. The music features various rhythmic patterns, including eighth and sixteenth notes, and rests. Some notes are marked with accidentals (sharps and flats). The notation includes slurs, ties, and dynamic markings like 'p' (piano). The piece concludes with a final cadence in measure 90.

Baritone

Pg - 4 -

W.F. Bach
Acht Fugen

Handwritten musical notation for the first system, consisting of two staves. The top staff contains measures 9 and 10, with a boxed '97' above the first measure. The bottom staff contains measures 11 and 12, ending with a double bar line.

VI

J. = 66

Handwritten musical notation for the second system, consisting of two staves. The top staff contains measures 13 and 14, with a boxed '9' above the second measure. The bottom staff contains measures 15 and 16, with a boxed '17' above the first measure.

Handwritten musical notation for the third system, consisting of two staves. The top staff contains measures 17 and 18, with a boxed '25' above the first measure. The bottom staff contains measures 19 and 20, with a boxed '33' above the second measure.

Handwritten musical notation for the fourth system, consisting of two staves. The top staff contains measures 21 and 22, with a boxed '41' above the first measure. The bottom staff contains measures 23 and 24, with a boxed '49' above the first measure.

Handwritten musical notation for the fifth system, consisting of two staves. The top staff contains measures 25 and 26, with a boxed '57' above the second measure. The bottom staff contains measures 27 and 28, with a boxed '65' above the second measure.

Handwritten musical notation for the sixth system, consisting of two staves. The top staff contains measures 29 and 30, with a boxed '65' above the second measure. The bottom staff contains measures 31 and 32, with a boxed '65' above the second measure.

Handwritten musical notation for the seventh system, consisting of two staves. The top staff contains measures 33 and 34, with a boxed '65' above the second measure. The bottom staff contains measures 35 and 36, with a boxed '65' above the second measure.

Handwritten musical notation for the eighth system, consisting of two staves. The top staff contains measures 37 and 38, with a boxed '65' above the second measure. The bottom staff contains measures 39 and 40, with a boxed '65' above the second measure.

Handwritten musical notation for the ninth system, consisting of two staves. The top staff contains measures 41 and 42, with a boxed '65' above the second measure. The bottom staff contains measures 43 and 44, with a boxed '65' above the second measure.

73

81

VII

Tacet

VIII

$\text{♩} = 58$

9

17

25

33

41

2

Handwritten musical score for Baritone, page 7 of W.F. Bach's Acht Fugen. The score consists of ten staves of music. Measure numbers are written in boxes above the staves: 49, 57, 65, 73, 81, 89, 97, 105, 113, 121, 129, 137, 145, and 153. The notation includes various rhythmic values, accidentals, and articulation marks.

Handwritten musical score for a single voice part, measures 161-201. The score is written on a single staff in treble clef with a 4/4 time signature. The key signature has one sharp (F#). The notation includes various rhythmic values, accidentals, and dynamic markings. The measures are numbered in boxes: 161, 169, 177, 185, 193, and 201. The piece concludes with a double bar line and a fermata over the final note.

Four empty musical staves, each consisting of five lines, arranged vertically. They are currently blank.