

The Entertainer by Scott Joplin *Arranged for Saxophone Quintet (or Saxophone Choir)*

The following pages contain the parts for an arrangement for a saxophone SAATB quintet (or saxophone choir).

IMPORTANT NOTE: This is a scan of hand-written parts. When printing, choose the option to "Fit to Printable Area" or "Shrink to Printable Area" to get all of the scanned area onto an 8.5x11 page.

Comments regarding the arrangement:

- While there are only 5 distinct parts (SAATB), this works well with parts played by multiple players in a saxophone choir setting.

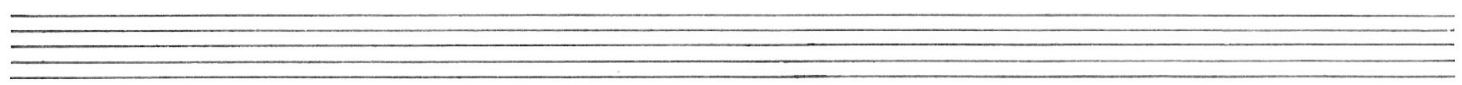
I've provided this arrangement free of charge. If you perform this piece, I'd appreciate hearing about it and if possible, I'd like to receive a copy of the program and a recording. I can be contacted at eddie@classicalsax.com

If you find any issues in the arrangement, please let me know so I can publish corrections.

Bb Soprano Saxophone The Entertainer Scott Joplin

Not fast

Handwritten musical score for Bb Soprano Saxophone of "The Entertainer" by Scott Joplin. The score is written on ten staves in 2/4 time with a key signature of one flat. It includes various musical notations such as notes, rests, dynamics (f, p), and fingerings. Measure numbers 5, 9, 13, 17, 21, 25, 29, 33, 37, 41, 45, 49, 53, and 57 are marked in boxes. The piece concludes with a double bar line and a key signature change to two flats.



Handwritten musical score for Soprano, measures 61-85. The score is written on a single staff in G major (one sharp) and 4/4 time. It features various musical notations including notes, rests, dynamics, and repeat signs.

Measures 61-65: Melodic line starting with a half note G4, followed by quarter notes A4, B4, C5, B4, A4, G4. Measure 65 ends with a fermata over a half note G4. Dynamics: $< f_2 > f$.

Measures 66-69: First ending (1.) and second ending (2.) for a phrase. Measure 69 ends with a fermata over a half note G4. Dynamics: $< f_2 > f$.

Measures 70-72: Rests for 4 measures.

Measures 73-76: Melodic line starting with a half note G4, followed by quarter notes A4, B4, C5, B4, A4, G4. Measure 76 ends with a fermata over a half note G4. Dynamics: $< f_2 > f$.

Measures 77-80: Rests for 4 measures.

Measures 81-85: Melodic line starting with a half note G4, followed by quarter notes A4, B4, C5, B4, A4, G4. Measure 85 ends with a fermata over a half note G4. Dynamics: $< f_2 > f$.

Five sets of empty musical staves, each consisting of five lines, provided for accompaniment or other parts.

E♭ Alto Saxophone I

The Entertainer

Scott Joplin

Not fast

5

9

13

17

21

25

29

33

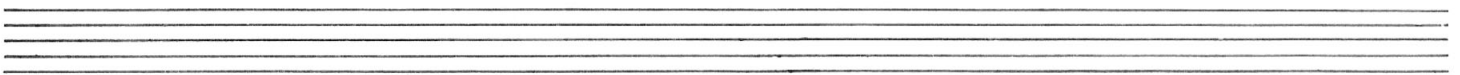
37

41

45

49

53



Handwritten musical score for Eb Alto I, measures 57-85. The score is written on six staves. Measure numbers 57, 61, 65, 69, 73, 77, and 81 are boxed. The music features various rhythmic patterns, including eighth and sixteenth notes, and rests. A dynamic marking $f_2 > f$ is present. A first ending bracket spans measures 65-73, with a second ending bracket starting at measure 73. The key signature is one flat (Bb) and the time signature is 4/4.

Five empty musical staves, each consisting of five horizontal lines.

E♭ Alto Saxophone II The Entertainer Scott Joplin

Not fast

Handwritten musical score for E♭ Alto Saxophone II of "The Entertainer" by Scott Joplin. The score is written on ten staves in 2/4 time. It includes various musical notations such as dynamics (f, p), accents (^), slurs, and repeat signs. Measure numbers are boxed and placed above the notes.

Measures 1-5: **5**

Measures 9-13: **9**

Measures 13-17: **13**

Measures 21-25: **21**

Measures 29-33: **29**

Measures 37-41: **37**

Measures 45-49: **45**

Measures 53-57: **53**

Measures 61-65: **61**

Measures 69-73: **69**

Measures 77-81: **77**

Measures 85-89: **85**

Bb Toner Saxophone

The Entertainer

Scott Joplin

Not fast

5

9

13

17

21

25

29

33

37

41

45

49

53

57

61

65

69

73

77

81

85

E♭ Baritone Saxophone The Entertainer Scott Joplin

Not fast

Handwritten musical score for E♭ Baritone Saxophone of "The Entertainer" by Scott Joplin. The score is written on ten staves in 2/4 time. It includes various musical notations such as dynamics (f, p), accents (^), slurs, and first/second endings. Measure numbers are boxed and placed above the notes. A "loset" section is indicated at the bottom with an asterisk and an arrow pointing to measure 81.